

IRRIGATION Newsletter



Irrigation season is fast approaching, and we know you're busy fixing equipment, preparing for planting, and making updates to your irrigation systems. As you work through your checklist, make sure Custer PPD is on it too.

Important reminders:

- Notify the office of any owner or renter changes.
- Notify the office of any control or rate changes no later than April 1.
- Ask about irrigation rebates, including moisture sensors, sprinkler package replacements, pump overhauls, and more.
- Review your fall irrigation statement for power factor percentages.
A power factor below 93% results in an adder on all demand charges.
- Irrigation services may be disconnected if the required capacitor is not connected or installed.
- Notify the office of any pump or pivot panel changes so the LCR can be verified.

Staying ahead of these items now can prevent delays, added costs, or service interruptions once the season is underway.

Mark Your Calendars

April 1

Deadline for irrigation rate change requests.

May 1

Bill for demand charges will be issued.

June 15

Payment deadline for demand charges.

October 15

Bill for summer irrigation kWh usage will be issued.

November 15

Payment deadline for summer irrigation kWh usage.

Irrigation Rates

	2025		2026	
	Demand	Energy	Demand	Energy
No Control	\$81.00	\$0.16308	\$81.00	\$0.17950
One Day	\$63.00	\$0.08683	\$63.00	\$0.09350
Two Day	\$60.00	\$0.07286	\$60.00	\$0.07880
Three Day	\$53.00	\$0.05978	\$53.00	\$0.06490
Full Control	\$47.00	\$0.04632	\$47.00	\$0.05100

Irrigation Demand Rates will remain the same for 2026, while Energy Rates will increase for the upcoming year.



"Agriculture is the most healthful, most useful and most noble employment of man."

~ George Washington ~

Irrigation Changes

Custer Public Power District is now in year two of the updated process for new irrigation services, and a few important changes that are worth highlighting.

One change for 2026 is a new form that must be completed for the Engineering Department when establishing a new irrigation service. This ensures the service is tailored to each customer's irrigation system requirements.

Another key change involves the Allowable Investment Limit (AIL). The AIL is paid back to the customer after the first year of operation for a new system. In our first year under this process, \$84,000 was returned to customers across eleven new irrigation services.

It's important to note that AIL is not limited to new irrigation services. Customers may receive AIL for the following service types:

- Rural and Town Residential
- Rural and Town General Single Phase
- Rural and Town General Three Phase
- Small General Three Phase Time-of-Use
- Grain Bin
- Residential Service Upgrades

Custer Public Power District New Electric Irrigation Service Info
Please provide the confirmed Horsepower for each motor below.

Required Well Information (recommended to visit with well driller)	Total Horsepower
Irrigation well motor (nameplate horsepower):	N/A
Total Bowl horsepower if known:	N/A
Maximum Pumping Plant Load:	Date of Test Pump:
Required Pivot System (irrigation) Information (visit with pivot dealer)	
Pivot Type: (circle one) Electric or Hydraulic:	N/A
Number of Pivot Towers:	N/A
Size of each pivot tower motor:	X # of towers
Size of all Booster Pumps (end gun, canal, etc.):	
Size of any additional motors including:	
hydraulic pump on T&L pivot _____ swing arm/corner system _____	
chemigation _____ fertilization _____ and all other motors connected to irrigation system _____	
IRRIGATION SYSTEM TOTAL CONFIRMED HORSEPOWER:	
Customer owned secondaries from meter to pump panel (visit with electrician):	
Customer owned secondary wire size:	
Customer owned secondary wire type: (circle one) copper or aluminum	
Load Control Receiver (LCR) Installation Requirements:	
Number of pivots irrigation well will be feeding:	
Legal description of additional pivots:	
1/4 Section _____ Township _____ Range _____	
1/4 Section _____ Township _____ Range _____	
1/4 Section _____ Township _____ Range _____	
Number of pivots irrigation well will be feeding at same time: _____	
<small>*If only serving 1 pivot, then 2 additional 12 gauge wires must be in place from the motor/pump panel to the pivot panel per Policy 300 Irrigation Load Management.</small>	
<small>**If serving more than 1 pivot and all the power is coming from this location, then a 3 pole contactor must be in place at the meter panel to control all pivots.</small>	
Legal description of irrigation well:	
1/4 Section _____ Township _____ Range _____	Initial here if map provided:
County _____ Field or Pivot Name: _____	
<small>Please submit an aerial image of the property, indicating where the well is located.</small>	
<small>I acknowledge that all the information above is confirmed to be accurate, and I understand that any discrepancies with this information may affect my eligibility for Allowable Investment Limit (AIL) credit as identified in Policy 115 Allowable Investment Limit Procedures.</small>	
Customer Name (please print): _____	
Signature: _____	Date: _____
For CP&D Use Only:	
Service Order/Work Order #: _____	Service Location #: _____ Area: _____ Rate Class: _____
AIL Eligible Amount: _____	PF%: _____ Peak KW: _____



The Custer PPD Engineering Department is available to answer questions regarding construction requirements and AIL eligibility for any of these service types. Reaching out early can help avoid surprises and keep projects moving forward.

Equipment Reminders

Custer PPD installs a Load Control Receiver (LCR) at every irrigation service. This device allows us to manage and control irrigation systems and is owned and maintained by Custer PPD.

Please contact Customer Service Manager April Gross or Meter Technician Brian Ridder if you notice that the LCR is:

- Unhooked
- Damaged
- Showing no indicator lights once the irrigation system is powered up

Brian will inspect the LCR and make any necessary repairs.

To ensure proper operation and safety, the LCR should only be serviced or wired by Custer PPD personnel. If the LCR needs to be removed during work on your system, just give us a call so we can coordinate reinstalling and rewiring.

Prompt communication helps avoid control issues and keeps your irrigation service running smoothly throughout the season.

A quick reminder on the lights of the LCR.

- Green light shows the LCR powered up and listening for a command.
- Red with Green lights show the LCR is in control preventing the irrigation system from running.

No Control

Controlled

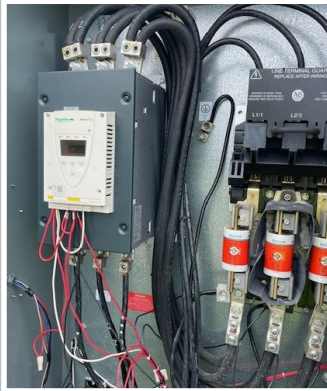


Equipment Reminders

Motor Equipment Requirements & Maintenance Reminders

Customers are required to have certain equipment installed based on motor size to ensure reliable operation and efficient electrical use.

Soft starts are required on all motors greater than 100 horsepower.



Capacitors are required on all motors 25 horsepower and larger.



Over time, capacitors can begin to wear out. Inside the metal enclosure are internal components that degrade due to heat, age, and normal operation. When this happens, the capacitor may no longer perform as designed.

Signs a capacitor may be failing include:

- Lower power factor on readings on your irrigation statement
- Increased demand charges due to power factor adders
- Motors running hotter or less efficiently
- Nuisance trips or inconsistent motor starts

A failed or disconnected capacitor can result in the power factor falling below 93%, which causes an adder on all

demand charges. In some cases, irrigation service may be disconnected until the required equipment is properly installed and is operating.

Regular inspection and maintenance of motor equipment before and during the irrigation season can help avoid higher costs, downtime, and service interruptions.

If you have questions about equipment requirements or want help verifying that your system is set up correctly. We're happy to help you stay ahead of issues before the season is in full swing.

Variable Frequency Drives (VFDs):

If your irrigation system uses a Variable Frequency Drive (VFD), a separate soft start and capacitor are not required, as these functions are built into the VFD.

If you have questions about equipment requirements, please contact the Custer PPD office for assistance.



For Information on EnergyWiseSM Ag Rebates,

Contact:

Customer Service Manager April Gross at 308.872.2471 or go to the custerpower.com website and look for the [Rebate Program](#) link.

The [Rebate Program](#) link will take you to all the energy-efficient incentives and resources that can help you save money and lower your bill. Incentives for Ag Operations can be found by using the Energywise Incentive link on that website page.

ENERGYWISESM
Use less. Spend less. Do more.

Load Control Messaging

Text Messages

Free notification via text message. If you aren't signed up, contact our Customer Service Department at 888-749-2453. A consent form must be completed.

Website

Go to custerpower.com and find the irrigation icon at the top of the webpage. A click on the icon will take you to the load control page.

Radio

KRVN 880-AM announcements are made daily at 8:29 a.m. Any changes to the 8:29 message are announced every half hour throughout the day.

In preparation for a hot, dry summer and everything that comes with it, Custer Power wants you to be prepared for the possible Sunday load control. As the hot, dry conditions increase there is an increased chance for Sunday load controls.

Here are some things to remember:

Max of 12 hours Monday – Saturday

Max of 6 hours on Sunday

Max of 72 hours Monday – Sunday

Control hours are subject to change during Emergency Situations.



Extended control hours are also possible during Emergency Situations.